

TECHNICAL SPECIFICATIONS

AMATURO THEATER



BROWARD CENTER

— *for the* —

PERFORMING ARTS

Fort Lauderdale, Florida
February 2014

The Amaturio Theater is scheduled to be renovated during
the summer of 2015

TABLE OF CONTENTS

GENERAL CONTACT INFORMATION.....2
MAP & DIRECTIONS.....3
TRUCK, BUS & VEHICLE PARKING4
SITE PLAN5
LOADING DOCK INFO8
SEATING CHART..... 10
STAGE SPECIFICATIONS 11
ORCHESTRA PIT / STAGE THRUST INFORMATION 11
STAGE DIMENSIONS / GROUND PLAN..... 12
RIGGING SPECIFICATIONS / OBSTACLES..... 14
SOFTGOODS INVENTORY..... 14
HANGING PLOT / LINE SCHEDULE 15
SOUND AND COMMUNICATIONS 17
LIGHTING INFORMATION.....20
POWER DISTRIBUTION.....20
GENIE LIFT20
DIMENSIONAL INFORMATION21
ORCHESTRA EQUIPMENT / CONCERT SHELL INFORMATION33
DRESSING ROOMS/SUPPORT SPACES.....34
BACKSTAGE MAP.....37
LOCAL SERVICES (Ground Transportation & Lodging)38
OTHER SERVICES/SHOPPING39
MEDICAL: HOSPITAL AND DOCTORS43
EQUIPMENT RENTAL RATES45

Amaturo Theatre

at the

Broward Center for the Performing Arts

201 Southwest 5th Avenue

Fort Lauderdale, FL 33312

Main Office (954) 522-5334 (M-F 8:30A-5:30P)

Main Fax (954) 468-2549

Box Office (954) 468-3338

PRODUCTION STAFF

Director of Production	Tim Lessig	(954) 468-2557	tlessig@browardcenter.org
Production Supervisor	Chris Jahn	(954) 765-5802	cjahn@browardcenter.org
Production Supervisor	Lucas Bonewits	(954) 468-3317	lbnewits@browardcenter.org
Production Coordinator	Diane DeChello	(954) 765-5819	ddechello@browardcenter.org
Production Assistant	Taylor Leonard	(954) 414-6906	tleonard@browardcenter.org
Production Assistant	Rebecca Feldman		rfeldman@browardcenter.org
Production Assistant	Scott Genn	(954) 468-3319	sgenn@browardcenter.org
Production Assistant	Britni Serrano		bserrano@browardcenter.org
Production Fax		(954) 468-3315	
Stage Door Security Desk		(954) 468-3323	

EVENT SERVICES STAFF

Vice President of Operations	Shelly Bradshaw	(954) 468-2696	sbradshaw@browardcenter.org
Event Manager	Pablo Urquilla	(954) 468-3313	purquilla@browardcenter.org
Associate Event Manager	Kerry McCloskey	(954) 414-6905	kmccloskey@browardcenter.org

STAGE LABOR - I.A.T.S.E. Local 500

The Broward Center for the Performing Arts employs members of I.A.T.S.E. Local 500 for all productions in the Au-Rene Theatre. For further information, please contact Production Staff for labors rates and work rules.

Head Carpenter	Sam Goldstein	(954) 522-5334 ext 4018	sambcpa@hotmail.com
Head Sound	Edmund Griffin	(954) 522-5334 ext 4032	96708@comcast.net
Head Electrician	Chris Tamber	(954) 522-5334 ext 4016	ctamber67@gmail.com
Assistant Sound	Ken Melvin	(561) 703-4666	kentech1961@hotmail.com
Business Agent Local #500	Terry McKenzie	(954) 881-2353	termack500@gmail.com

ADDITIONAL CONTACTS INFORMATION

Director of Guest Services	David Dillon	(954) 468-3305	ddillon@browardcenter.org
Director of Food & Beverages	Vinnie Venezia	(954) 468-3337	vvenezia@browardcenter.org

MAP & DIRECTIONS

The Broward Center is conveniently located in the Riverwalk Arts & Entertainment District in downtown Fort Lauderdale, equidistant between Dade and Palm Beach Counties and can be reached by several routes.

From Interstate-95:

Exit at Broward Boulevard, Go east.

From Florida Turnpike (southbound):

Exit at Sunrise Boulevard, Go East to South-bound I-95, exit Broward Boulevard, Go east.

From Florida Turnpike (northbound):

Exit at I-595, Go East to North-bound I-95, exit Broward Boulevard, Go east.

To Backstage Parking Lot:

From Broward Boulevard turn right (South) onto SW 7th Avenue (Avenue of the Arts). Turn left at West Las Olas Blvd (the second light). Take an immediate left into the backstage lot security gate. Push the buzzer to contact guard. Identify yourself and guard will let you enter.

To Parking Garage and Valet:

Broward Boulevard. Turn South onto SW 5th Avenue. The Arts and Science Parking Garage is on the immediate right, or, proceed straight ahead, cross 2nd Street (Himmarshee St.) and continue to the top of the hill for valet service.

From Fort Lauderdale Airport to Backstage Lot:

Take the "US1 / Federal Highway Northbound" exit out of the Airport. Travel North on US1 to SE 17th Street Causeway. Turn left (West) and go to SW 4th Avenue and turn right (North). SW 4th Avenue will become SW 7th Avenue at the bridge. Go over the bridge, turn right at West Las Olas Blvd . Take an immediate left into the backstage lot security gate. Push the buzzer to contact guard. Identify yourself and guard will let you enter.

North Gate - Trucks going to Loading Dock:

From Broward Boulevard turn South onto SW 5th Avenue. Turn right at Second Street (Himmarshee Street). The gate entrance to back-stage lot is on your left. Push the buzzer to contact guard. Identify yourself and guard will let you enter.

GPS Address (do not us for anything else!)

To the backstage Security gate:
641 West Las Olas Boulevard
Fort Lauderdale

To the North Gate (truck & bus parking)
582 SW 2nd Street
Fort Lauderdale FL

TRUCK, BUS & VEHICLE PARKING

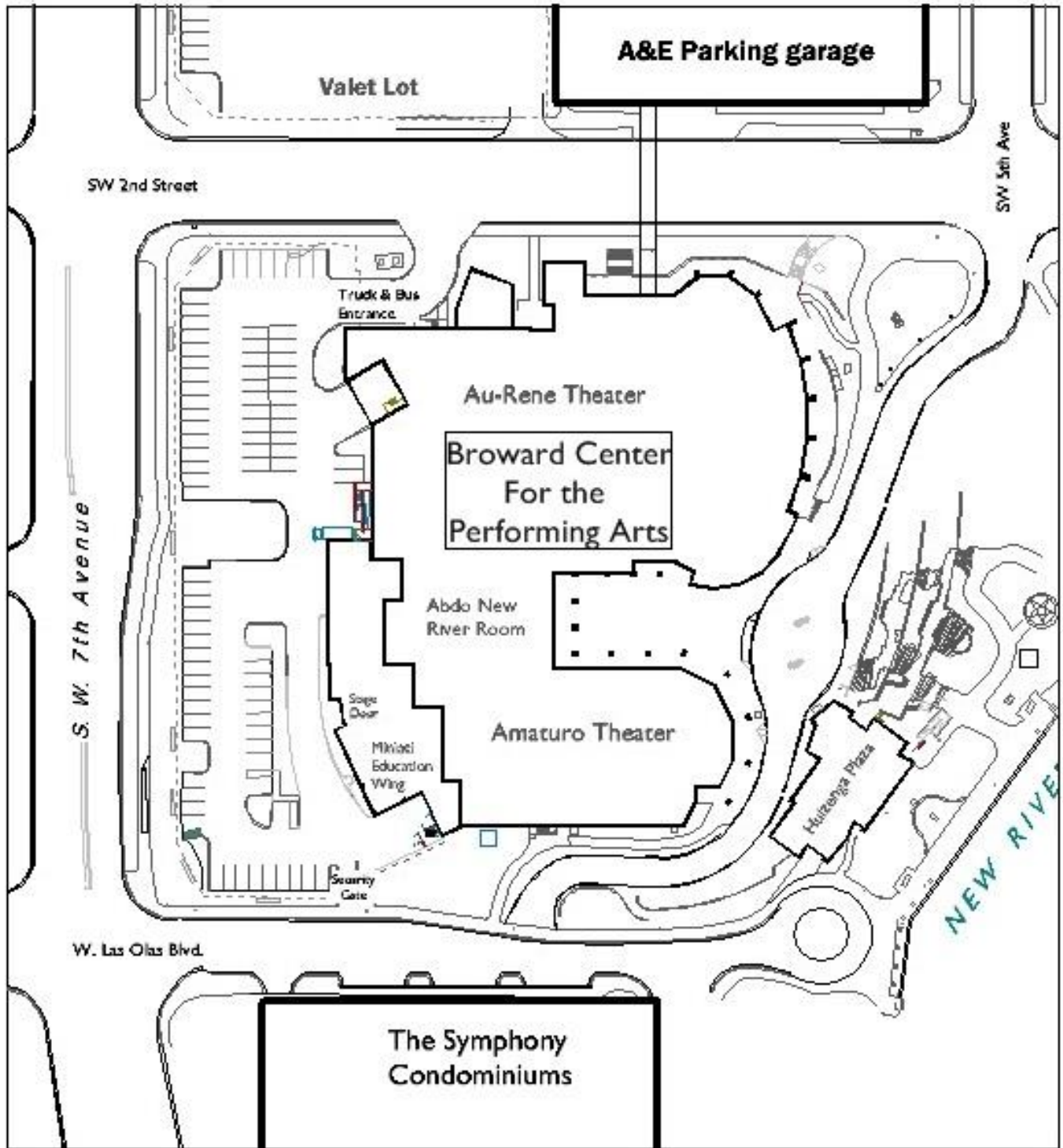
Truck & Bus Parking on site is very limited. Please inquire with Production Staff prior to arrival. There is parking available directly backstage in the lot for 10 cars and additional parking available for 40 cars in the Arts and Science parking garage located across the street from the theatre. All parking arrangements must be discussed with Production Staff prior to the event for necessary passes and badges.



BCPA Parking Lot



Broward Center Site Plan

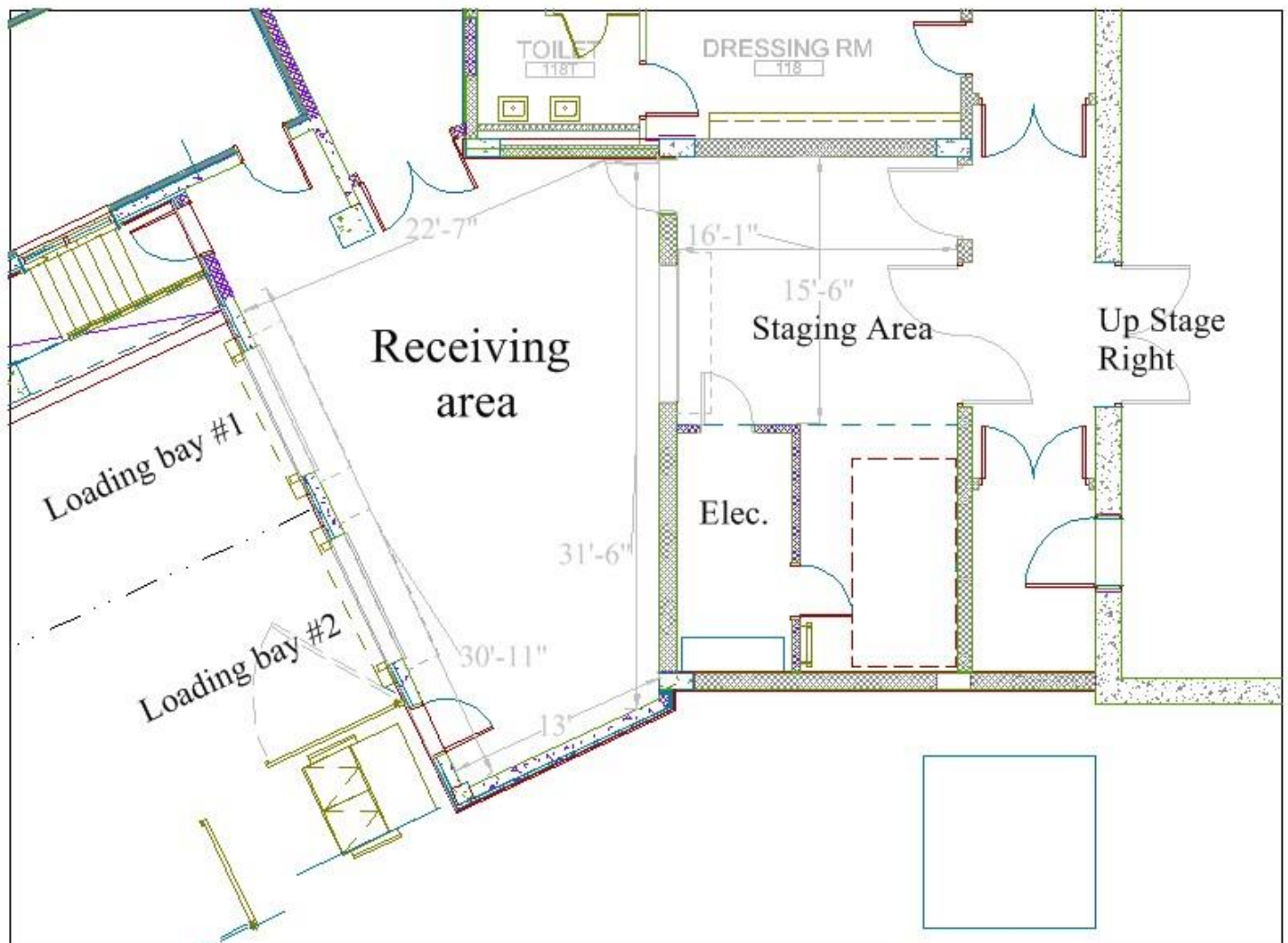


LOADING DOCK

The Amaturio Loading Dock is located at the southwest corner of the building at S.W. 7th Ave and Las Olas Boulevard, but trucks must use the entrance on the north end of the parking lot on Himmarshee Street. There are two loading bays. The dock is 3' high, and the receiving doors are 8' wide by 8' high. The doors from the receiving area onto the stage are 7'-6" w x 25' h'.

The receiving area is used to store the Amaturio's orchestra shell, as well as other equipment, depending on activities within the building. This will not impede loading equipment into the theater, but if you need that space during your event, please discuss with the Production Department in advance of your event.

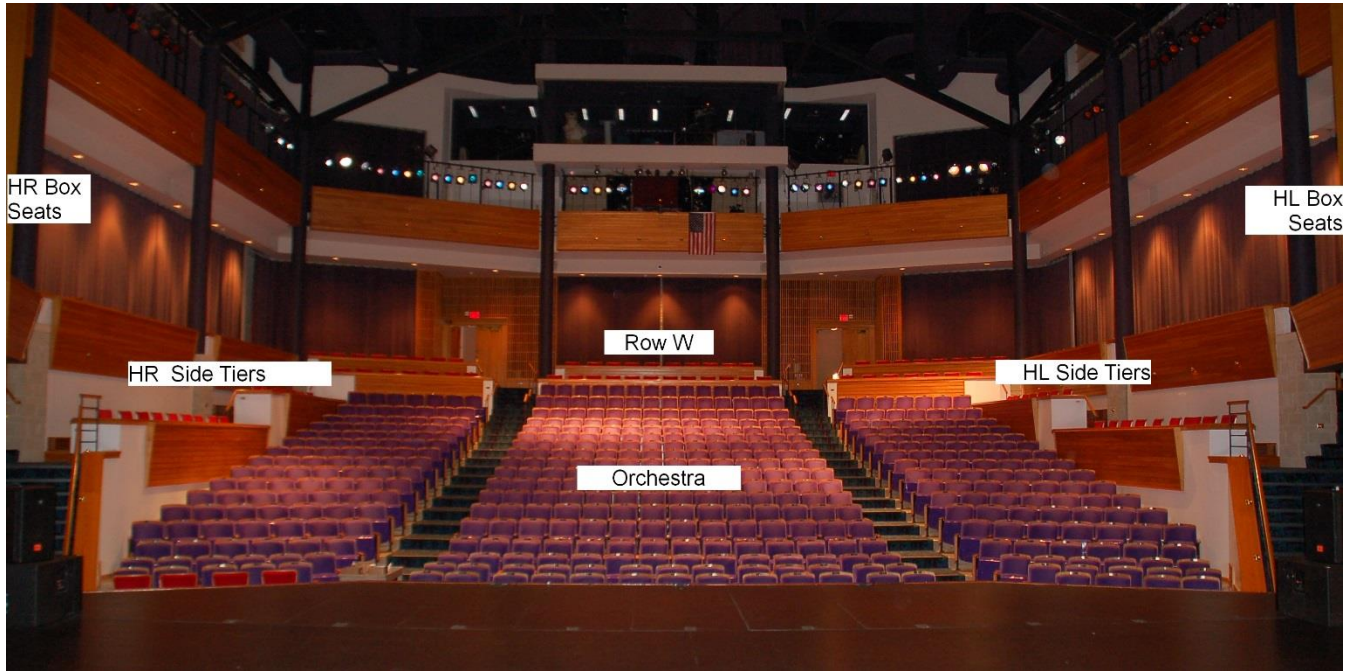
Prior notice is necessary if the dock will be accommodating a tractor trailer longer than 40'; part of the lot must be reserved so the truck can maneuver. Shore Power is available, but you must supply your own tails.



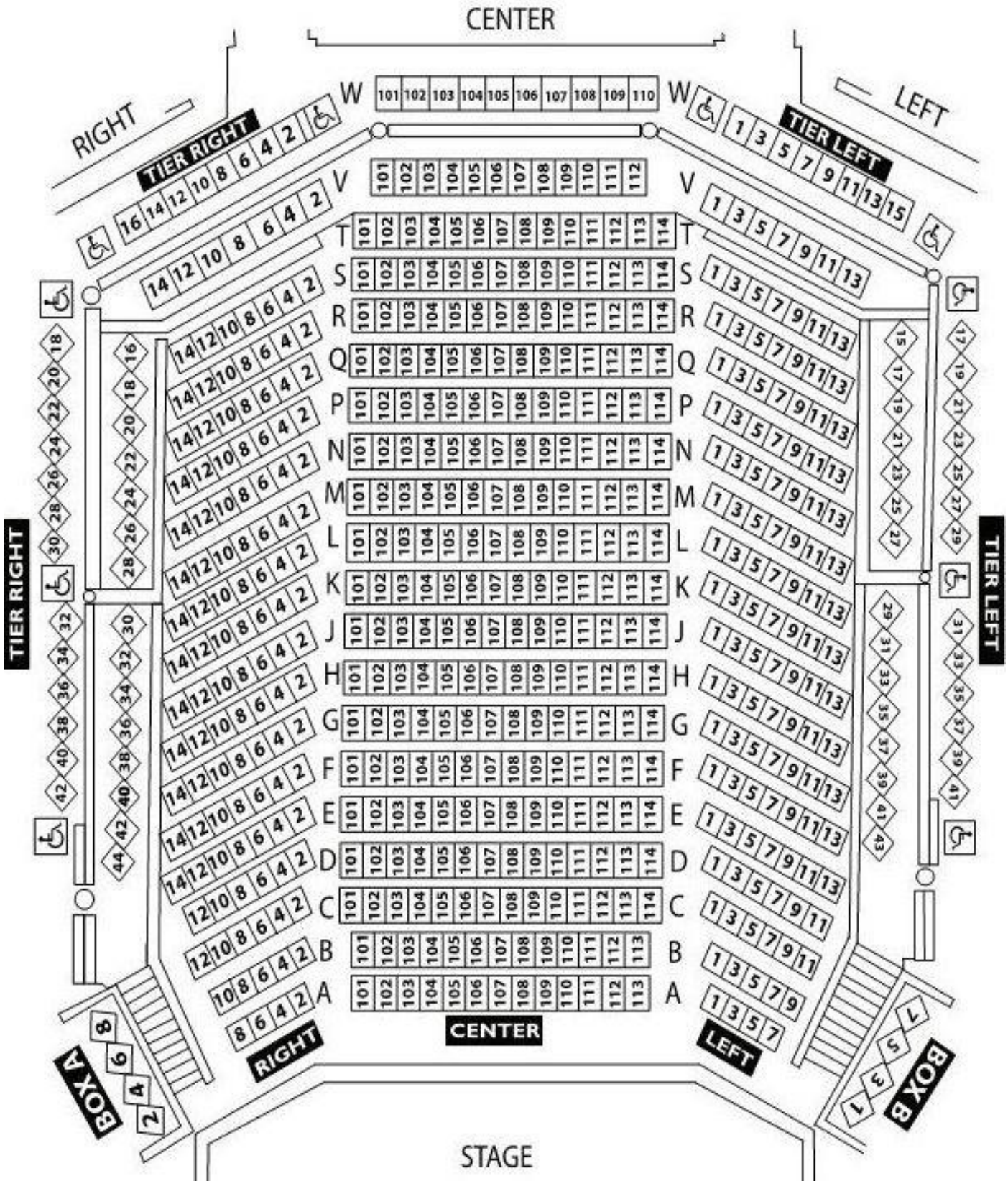
SEATING INFORMATION AND CAPACITY

(MAXIMUM SEATING CAPACITY IS 582 SEATS (See seating map on follow page))

Orchestra Section	Rows A – T	488 seats
Side Tiers	Rows V – W	86 Seats
Box Seats		8 Seats
		Total 582 seats



SEATING CHART



STAGE SPECIFICATIONS

STAGE FLOOR is a semi-sprung floor with double layer tongue and groove plywood on aluminum sleepers over rubber blocks, and finished with black masonite/bennelex. The rubber blocks are surrounded by a steel channel which limits over-decompression. Any damage to floor incurred by a production must be restored.

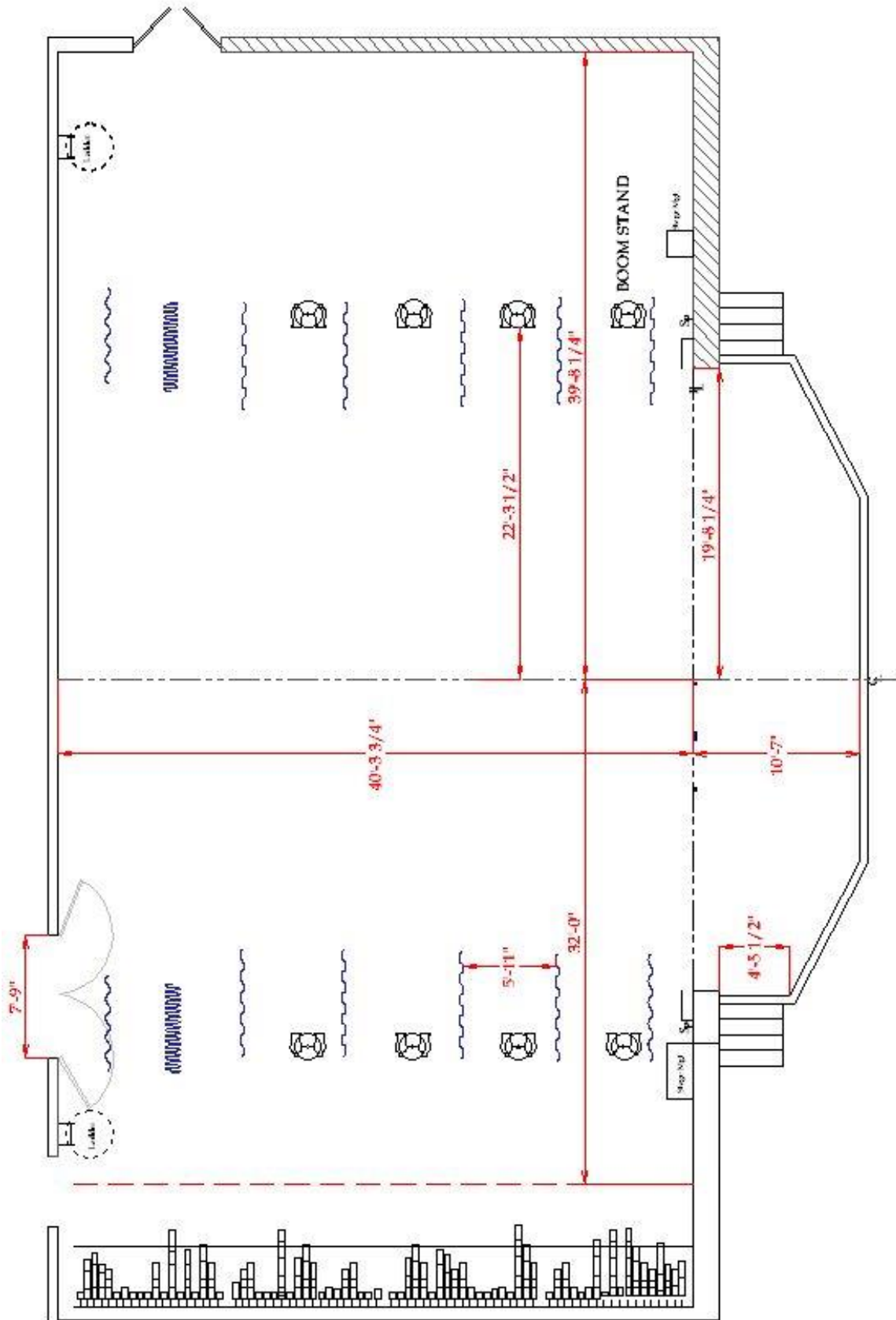
HEIGHT OF GRID	50'
HEIGHT OF PROSCENIUM	25'
WIDTH OF PROSCENIUM	39' 10"
HEIGHT OF GALLERIES	
Upper Loading Gallery	50'
Middle Loading Gallery	26' 6"
Pin Rail SL	25' 5"
DEPTH OF STAGE (from Plaster Line)	40'
WIDTH OF STAGE	75'-6"
Width of stage (center to SR)	32'
Width of stage (center to SL)	39' -6"
CENTER STAGE TO PINRAIL SR	36'
APRON (from Plaster Line)	1' -7"
(from House Curtain)	2' -7"
FULL THRUST (from Plaster line)	10' -7"
(from House Curtain)	11' -7"
HEIGHT OF STAGE (seating level to stage level)	3' -4"

ORCHESTRA PIT

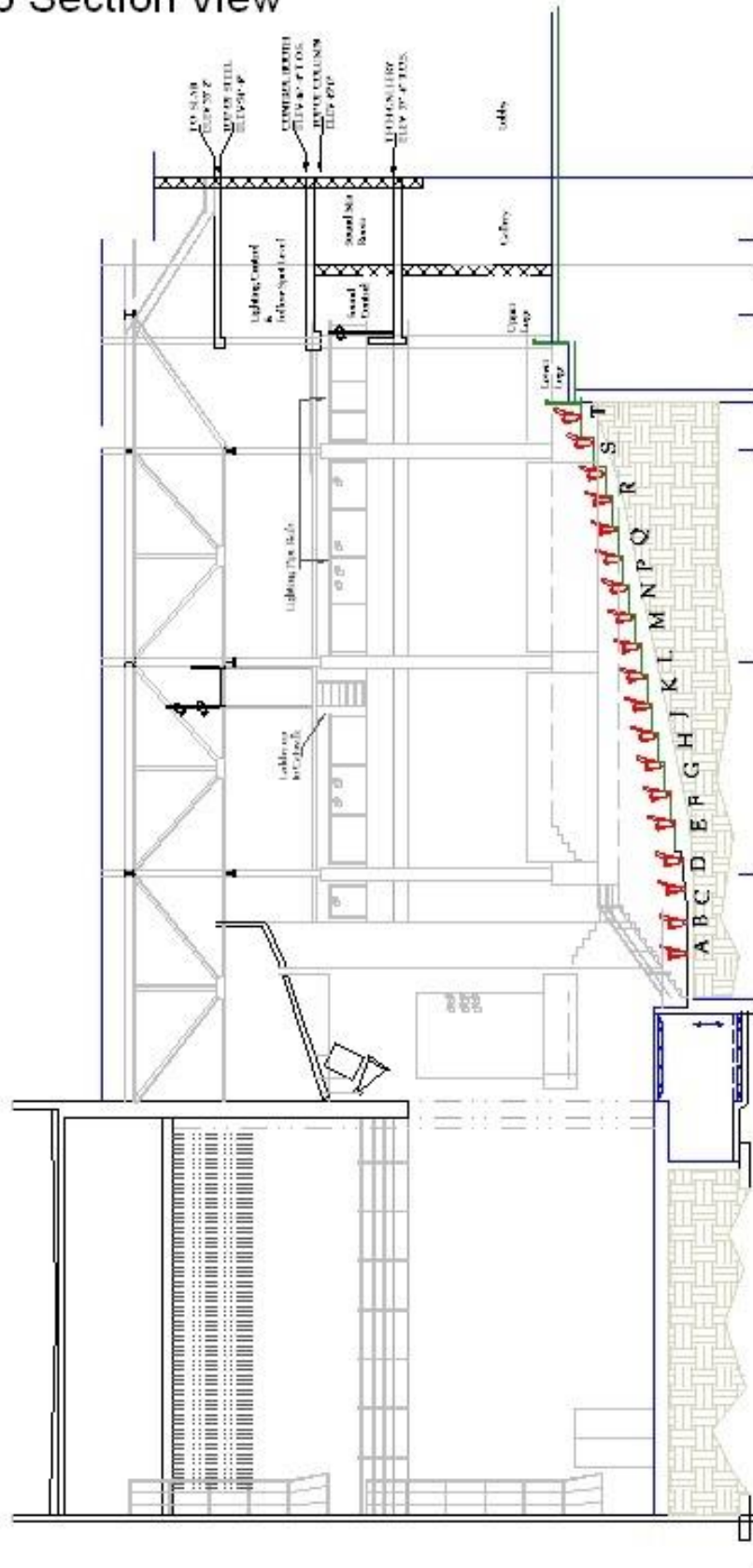
The Pit has a cover that extends the stage apron to 10' -7". This cover consists of 15 pieces that are manually moved down to create the floor of the Pit for use. The Pit under-hang is 5' -6"

Opening (Stage Edge to DS Pit Wall)	9'
Overall Dimensions (including pit under-hang)	40' x 14' 6" (D shaped)
Approximate Capacity of Musicians	35
HEIGHT OF PIT (pit level to stage level)	8' -3"

STAGE PLAN



Amaturo Section View



RIGGING SPECIFICATIONS

Single purchase counterweight, hand-operated line sets operated from the deck stage right.

NUMBER OF LINE SETS	73 line sets, 6" on center
GRID HEIGHT	50'
TRAVEL DISTANCE	48'
MAX WEIGHT PER ARBOR	1400 lbs
TOTAL WEIGHT AVAILABLE	102,200 lbs
LENGTH OF BATTENS	48'
TAB PIPES (5 pairs)	26' OC SL & SR

HOUSE CURTAIN is a manual counterweight guillotine center split velour curtain located 5" upstage from smoke pocket. Curtain in operated from stage level down stage right and is not part of the operating rail. House Curtain is permanent and cannot be moved or removed.

SOFT GOODS INVENTORY

- 6 black velour borders (10' h x 48' w)
- 12 black velour legs (27' h x 10' w)
- 8 Black Velour tabs (27' h x 4' w)
- 1 black velour split traveler curtain (27' h x 45' w)
- 2 black velour curtains (27' h x 45' w)
- 1 black sharks tooth scrim (27' h x 48' w)
- 1 white cyclorama (27' h x 48' w)

Hanging Plot

SHOW:				
Line Set #	Position	House Hang	Show Hang	Weight
	0"	Smoke Pocket		
	5"	House curtain		
1	1'8"	#1 black border		
2	2'2"	Flying Microphones		
3	2'8"	#1 Black Legs		
4	3'2"	Electric #1		
5	3'8"	Electric #1 helper		
6	4'2"	Electric #1A MR16 striplights		
7	4'8"			
8	5'2"			
9	5'8"			
10	6'2"	#1 B Elec (3P56 Strips)		
11	6'8"			
12	7'2"			
13	7'8"			
14	8'2"	#2 black border		
15	8'8"	#2 black legs 19'		
16	9'2"			
17	10'2"	Electric #2		
18	10'8"	Electric #2 helper		
19	11'2"	Electric #2A MR16 striplights		
20	11'8"			
21	12'2"			
22	12'8"			
23	13'2"			
24	13'8"			
25	14'2"	#3 black border		
26	14'8"	#3 black legs 19'		
27	15'2"			
28	15'8"	Black Scrim		
29	16'2"	Blackout Drop		
30	16'8"			
31	17'2"	Electric #3		
32	17'8"	Electric #3 helper		
33	18'2"	Electric #3A		
34	18'8"			
35	19'2"			
36	20'1"			
37	20'8"			
38	21'2"			
39	21'8"	#4 black border		

40	22'2"	#4 black legs 19'		
41	22'8"			
42	23'2"			
43	23'8"			
44	24'2"	Electric #4		
45	24'8"	Electric #4 helper		
46	25'2"	Electric #4A MR I 6 striplights		
47	25'8"			
48	26'2"			
49	26'8"			
50	27'2"			
51	27'8"			
52	28'2"	#5 black border		
53	28'7"	#5 black legs 19'		
54	29'1"			
55	30'2"			
56	30'8"	Electric #5		
57	31'2"	Electric #5 helper		
58	31'8"			
59	32'2"	#6 black border		
60	32'8"			
61	33'2"	Traveler w/ B.O. Drop		
62	33'8"			
63	34'2"	#6 Electric (5 Far Cyc 3 Cir)		
64	34'8"			
65	35'2"			
66	35'8"			
67	36'2"			
68	36'8"			
69	37'2"	#6 black legs		
70	37'7"	White filled scrim-CYC		
71	38'1"	Blackout drop		
72	38'6"	Sunrise/Sunset Drop		
73	38'11"			

SOUND AND COMMUNICATIONS

SPEAKER CONFIGURATION

The House has 3 FOH Clusters permanently located on proscenium at center, right and left. Each cluster is actively bi-amplified by means of a DBX 4800 speaker management system, and contains:

- 1- Electro Voice HP9040 with a DH1A driver,
- 1- Electro Voice HP6040 with a DH1A driver,
- 1- Community VB 664
- 2- JBL 2226H 15" woofers



The Side and Front fills are controlled by a DBX 260 speaker management system:

- Side Box Delay System: 32- Altec 409-8D
- Stage Lip System: 96- JBL 8110h
- 2 JBL 18" Subs

Effects Speakers

- 8- EAW LC12 (mounted on side and rear walls of the theater)(wired for Surround Sound)

SOUND MIX POSITIONS – There is only one mixing position available in the Amaturio Theatre; it is located along the center of the rear wall, in the Tech Gallery. It is fully open to the room. (See photo on page 23)

FRONT OF HOUSE CONSOLE

Midas Verona 40 x 8 x 8 x 4 x 3

4 monitor mixes available from FOH, 5 channels DBX2231 EQ.

AVAILABLE OUTBOARD GEAR

1- TC M-OneXL

4- JBL TC D-2

4 – DBX 1046 4X for Comp/Limit (16 channels)

SOURCE GEAR

2 – Sony Mini Disc machines with Auto Pause

1 – Sony CD player with Auto Pause

1 Sony – CD Recorder

MONITORS & MICROPHONES

NOTE: The following Monitor Equipment and Microphone package is shared with other venues at the Broward Center and may not be available for your event unless prior arrangements have been made with Production Staff in advance.

MONITOR CONSOLE:

Yamaha PM5D-RH

MONITOR SPEAKERS:

- 2 Shure in-ear monitors PSM700 w/ E3 SHU P7TRE3
- 14 powered speakers Meyers UMP-100p
- 2 Stage monitors Meyers USM-100P
- 4 Side Fill speakers Meyers UPQ-IP
- 4 powered subwoofer – dual 10” Meyers UMS-IP
- 2 EV I502 ER
- 6 JBL MRX 512M
- 5 EAW VM12
- 4 Galaxy hot spots
- 7 Anchor AN 1001 X
- 1 Anchor AN 1000 self powered
- 1 Galaxy Audio Hot Spot PAIII self powered hot spot

Portable Microphone Splitter:

- 1 58 pair Whirlwind splitter with 1 direct out and 2 ISO splits
- 1 15 Pair Wireworks splitter
- 6 15 Pair permanent Mic input mults home run to sound booth from various locations

MICROPHONES

WIRED MICROPHONES:

<u>Manufacturer/Model</u>	<u>Quantity</u>	<u>Manufacturer/Model</u>	<u>Quantity</u>
Shure KSM 9	8	Sennheiser ME 66	4
Shure KSM 141	6	Sennheiser MD421U	3
Shure KSM 32	6	Sennheiser MD441	1
Shure Beta SM57	9	Earthworks PM 40	2
Shure Beta SM58	7	Electro Voice RE320	2
Shure SM81	5	Electro Voice RV18	3
Shure SM87A	6	Electro Voice RE20	4
Shure Beta 98A	8	Electro Voice DS35	4
Shure Beta 91	2	Whirlwind PB 12	2
Shure Beta 52	2	Beyer M160	4
Shure Beta 181S	4	Neuman KM 180	2
Shure Beta 56	6	Audio Tech AT857QMa	3
Shure Beta 57A	8	Audio Tech AT857QMLa	1
Shure WA310	12	Crown PCC 160	8
AKG C141 XLII/ST	2	Crown PZM LP6	3
AKG C214	2	Crown PZM 6RB	4
AKG C535	2	Crown GLM 200	2
Countryman ISOMAX 2	12	B & K 401 I	2
Countryman ISOMAX 2H	12		
Countryman M4HP5RF24EB	6		

WIRELESS MICROPHONES:

There are six (6) channels of Shure UR4D Diversity Receivers

- 6 Sure Beta 58 handheld transmitters
- 8 KSM9 alternate cartridge for handheld transmitters
- 6 UR1 Bodypack transmitters
- 3 Shure MKE 2 gold lavalier microphones
- 3 Countryman E6 earset microphones

There are 4 channels of SHURE U4D Receivers, Series J5, frequency agile 578-638 MHz

The following microphones are available for these receivers:

- 4 Shure U2 BETA 87A handheld transmitters
- 4 Shure U1 bodypack transmitters w/Countryman B-3 mics

There are 8 channels of SHURE SLX Receivers, Series H5, frequency agile 518-548 MHz

The following microphones are available for these receivers:

- 2 Shure BETA SM87 handheld transmitters
- 8 Shure SLX bodypack transmitters w/Countryman B-3 mics

There are 8 channels of Shure SLX receivers, Series L4, frequency agile 638-662 MHz

The following microphones are available for these receivers:

- 2 Shure BETA SM87
- 9 Shure SLX Lavaliers w/Countryman B-3 mics

DIRECT INPUT BOXES:

- | | | |
|----|------------------------------|------------|
| 10 | Countryman FET 85 | Passive DI |
| 6 | Radial Engineering JDI MKIII | Passive DI |
| 4 | Radial Engineering JPC | PC DI |
| 2 | Whirlwind PCDI | PC DI |

LIGHTING INFORMATION

The Amaturro Theater is equipped with an extensive permanent "house" lighting plot. It comes focused and colored as per that plot. Any refocusing of equipment during the load-in must be restored during the load-out. To obtain copies of lighting plot contact the production offices. Available in PDF, CAD or hard copy.

CONTROL

- 1 ETC Insight 2X. W/ 3X software
- 288 2.4k Colortran dimmers

POWER DISTRIBUTION

- 2 100 amp 3 phase (1) DSR and (1) DSL
- 1 400 amp 3 phase USR at loading dock w/truck wall ports

FOLLOWSPOTS

- 2 Lycian HTI-400 Followspots located in tech gallery

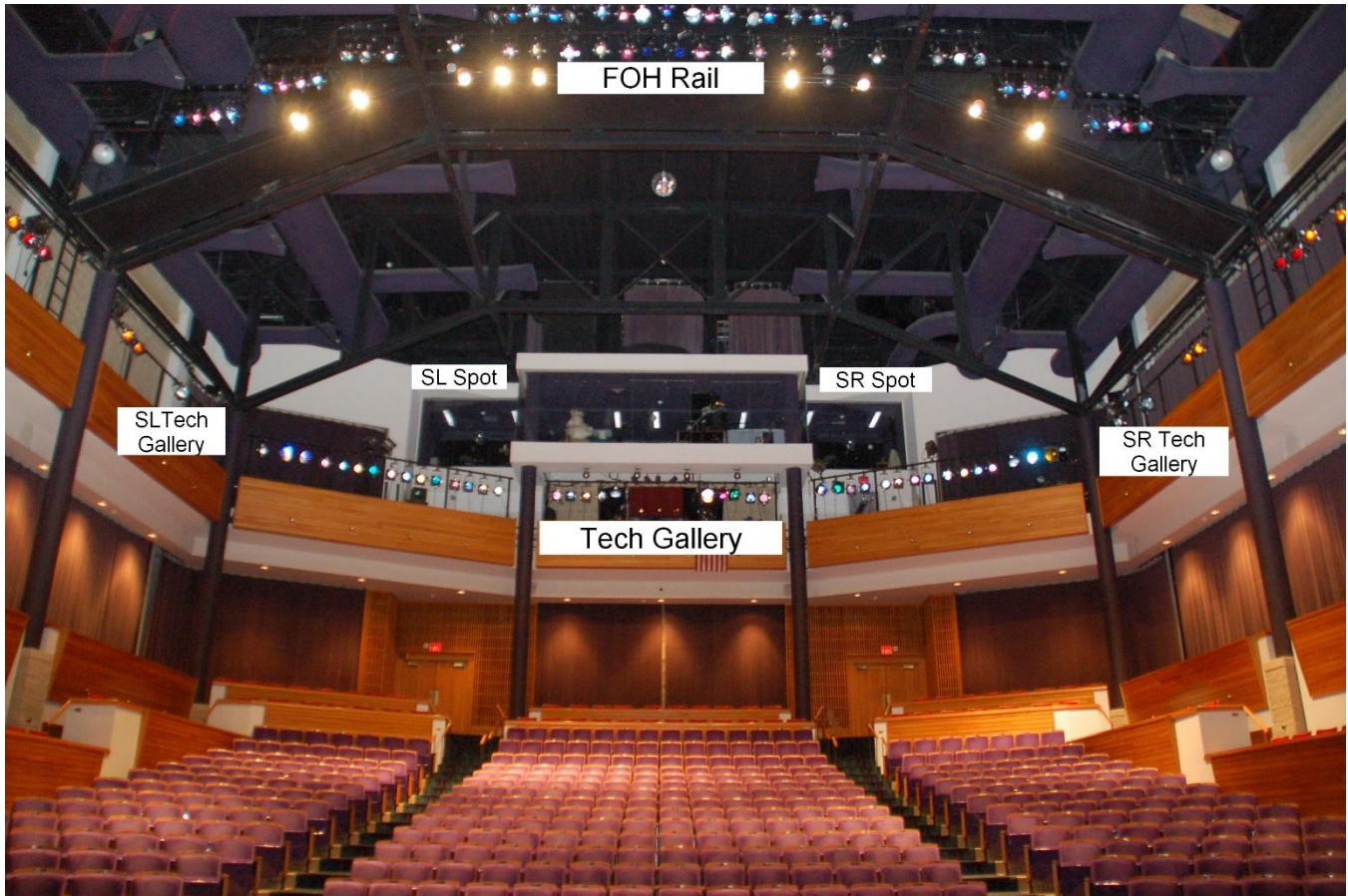
COMPLETE INVENTORY

The Amaturro Theater has a permanent repertory light plot; therefore most of the inventory is hanging

Unit Description	Detail	Total	Hanging	Available
Colortran Ellipsoidal 5 deg.	#650-082	14	12	2
Colortran Ellipsoidal 10 deg.	#650-072	49	44	5
Colortran Ellipsoidal 15 deg	#650-052	4	4	0
Colortran Ellipsoidal 20 deg	#650-042	95	90	5
Colortran Ellipsoidal 30 deg	#650-032	111	106	5
Colortran Ellipsoidal 40 deg	#650-022	82	80	2
Colortran Ellipsoidal 50 deg	#650-012	6		6
Par cans (P64)		31	12	19
Par 56 striplights		17	3	14
Mini-strips		33	20	13
Far Cyc		5	5	0
18' booms w/bases		2		
36' Genie personnel lift		1		

DIMENSIONAL INFORMATION

Curtain line to Technical Gallery	86'
Curtain line to FOH rail	58'
Curtain line to Follow Spot booth	90'
Technical Gallery R to L	70'



LIGHTING MAGIC SHEET

<u>PINK FOH (fronts)</u> 7 6 5 4 3 2 1	<u>BLUE FOH (fronts)</u> 17 16 15 14 13 12 11	<u>AMBER FOH (fronts)</u> 26 25 23 22 21	<u>N/C FOH (fronts)</u> (forest break-ups) 33 32 31
--	---	--	---

<u>BOX BOOM PINK</u> (mainly for apron) 9 8 303 301	<u>BOX BOOM BLUE</u> (mainly for apron) 19 18 313 311	<u>FRONT RED WASH</u> 36 <u>FRONT DARK BLUE</u> <u>WASH</u> 35	<u>PINK DOWN</u> 75 74 73 72 71
--	--	--	--

<u>BLUE STRIPS</u> 47 48 47 45 46 45 43 44 43 41 42 41	<u>RED STRIPS</u> 57 58 57 55 56 55 53 54 53 51 52 51	<u>AMBER STRIPS</u> 67 68 67 65 66 65 63 64 63 61 62 61	<u>BLUE DOWN</u> 80 79 78 77 76
--	---	---	--

<u>PINK HI SIDES</u> 90 85 89 84 88 83 87 82 86 81	<u>BLUE HI SIDES</u> 100 95 99 94 98 93 97 92 96 91	<u>BLUE BACK LT.</u> 139 138 137 136 135 118 135 134 133 113 132 131 108 130	<u>SHINS (Booms)</u> 218 214 217 213 216 212 215 211
---	--	--	--

<u>BOOM PINK</u> 178 174 177 173 176 172 175 171	<u>BOOM N/C LEAVES</u> 188 184 187 183 186 182 185 181	<u>BOOM AMBER</u> 198 194 197 193 196 192 195 191	<u>BOOM LAVENDER</u> 208 204 207 203 206 202 205 201
--	--	---	--

<u>APRON RED</u> 312 312	<u>SOLO SPOT SPECIALS</u> 297 298 299		<u>MIRROR BALL</u> 220 219
-----------------------------	--	--	-------------------------------

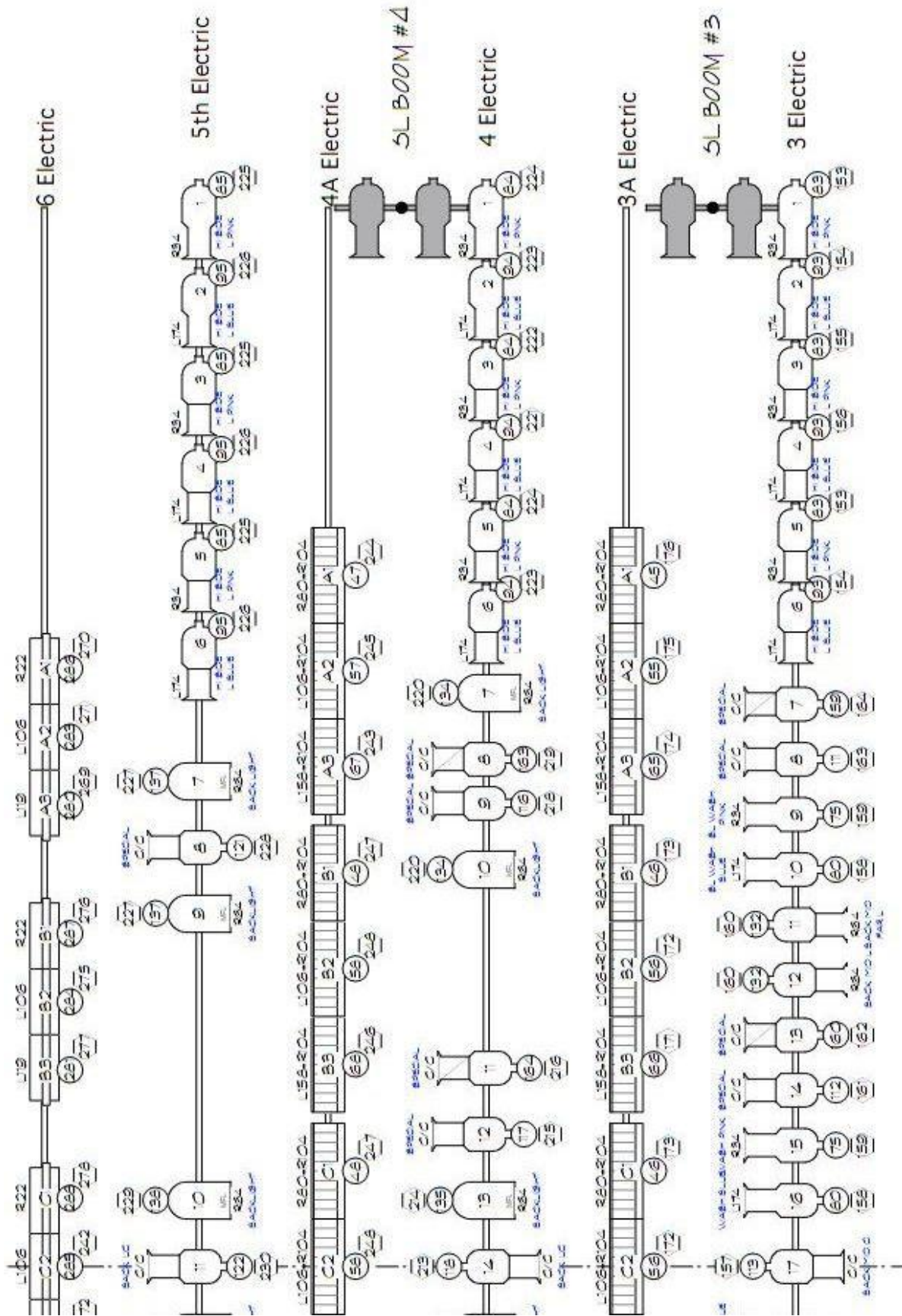
<u>APRON LAVENDER</u> 302 302	<u>APRON PINK</u> 308, 306 307, 305	<u>APRON BLUE</u> 318, 317 316, 315	<u>APRON N/C</u> 324, 323 322, 321
----------------------------------	--	--	---------------------------------------

<u>BLUE CYC</u> 282 281 280	<u>RED CYC</u> 285 284 283	<u>AMBER CYC</u> 288 287 286	<u>NOTES</u>
--------------------------------	-------------------------------	---------------------------------	--------------

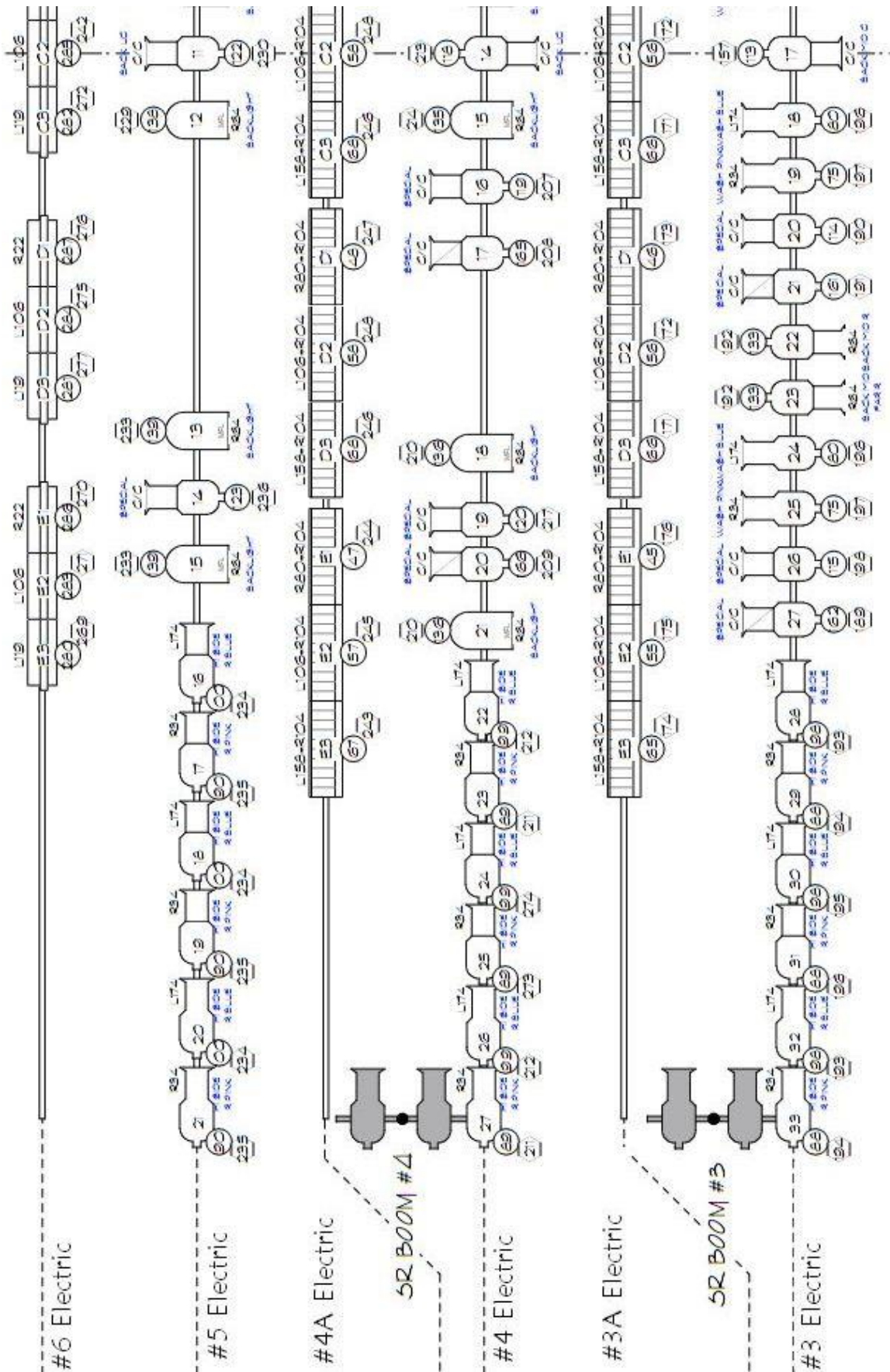
FOCUSABLE UNITS:

1ST ELECTRIC:	101, 102, 103, 104, 105, 151, 152, 153, 154, 167	
2ND ELECTRIC:	106, 107, 109, 110, 155, 156, 157, 158	
3RD ELECTRIC:	111, 112, 114, 115, 159, 160, 161, 162	
4TH ELECTRIC:	116, 117, 119, 120, 163, 164, 165, 166	
5TH ELECTRIC:	121, 122, 123	

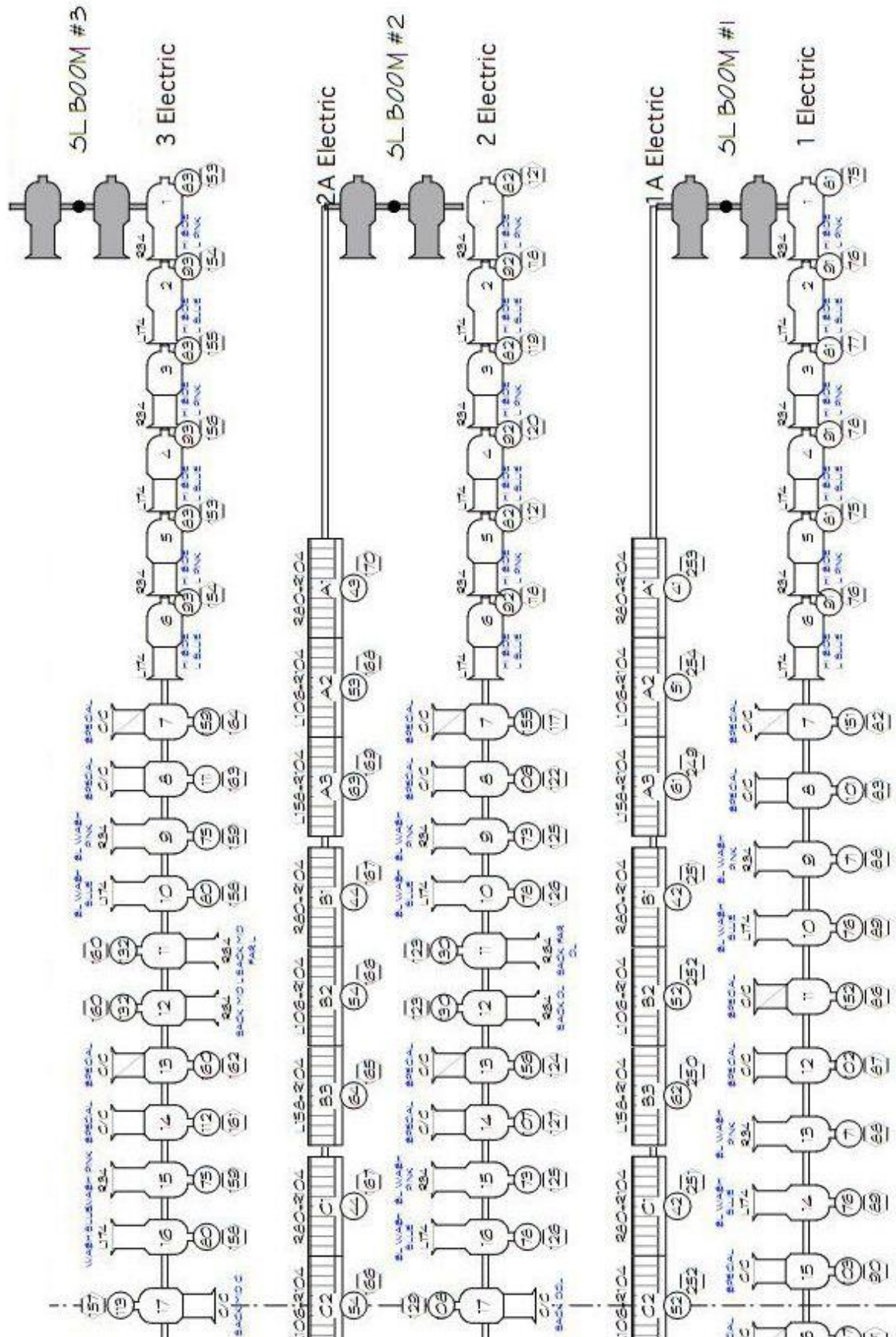
Stage Lighting Plot: USL



Stage Lighting Plot: USR

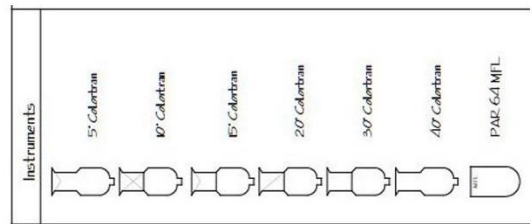
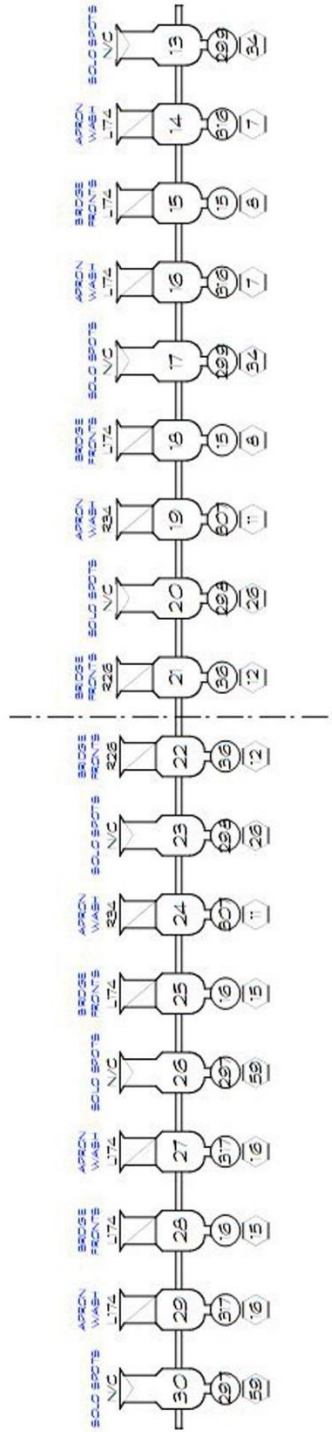


Stage Lighting Plot: DSL



FOH Bridge

↑
Stage



LEGEND
 Color
 Color
 Template
 Unit Number
 Channel
 Dimmer



BROWARD CENTER
 FOR THE PERFORMING ARTS
 Fort Lauderdale, Florida

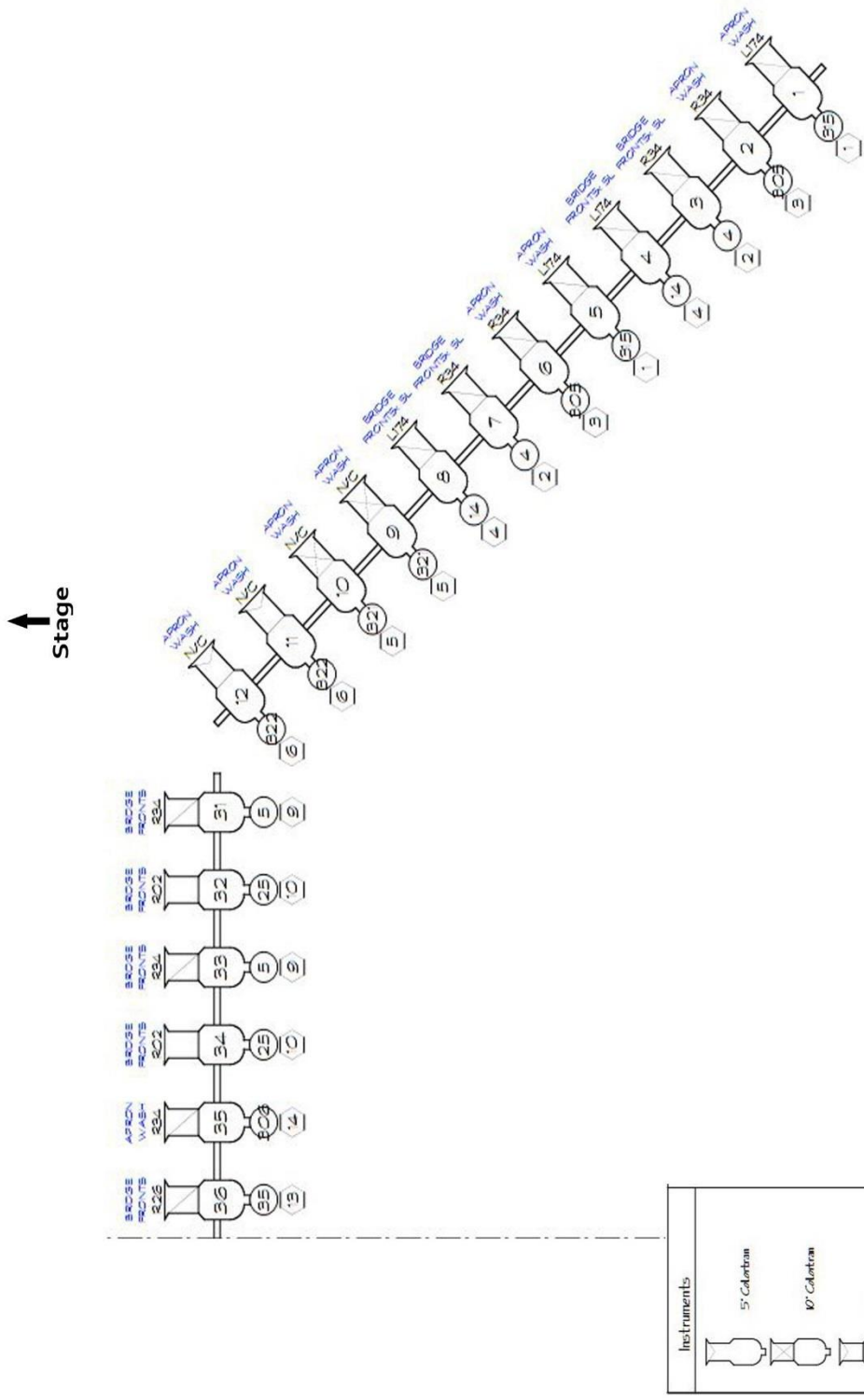
Amaturo Theater Rep Lighting Plot
 Drawing By: JRC
 Date: 5/12/2004

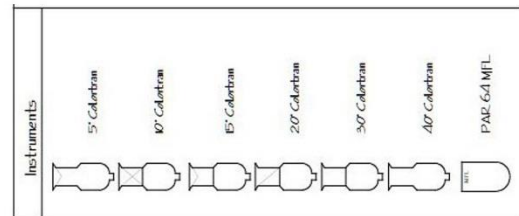
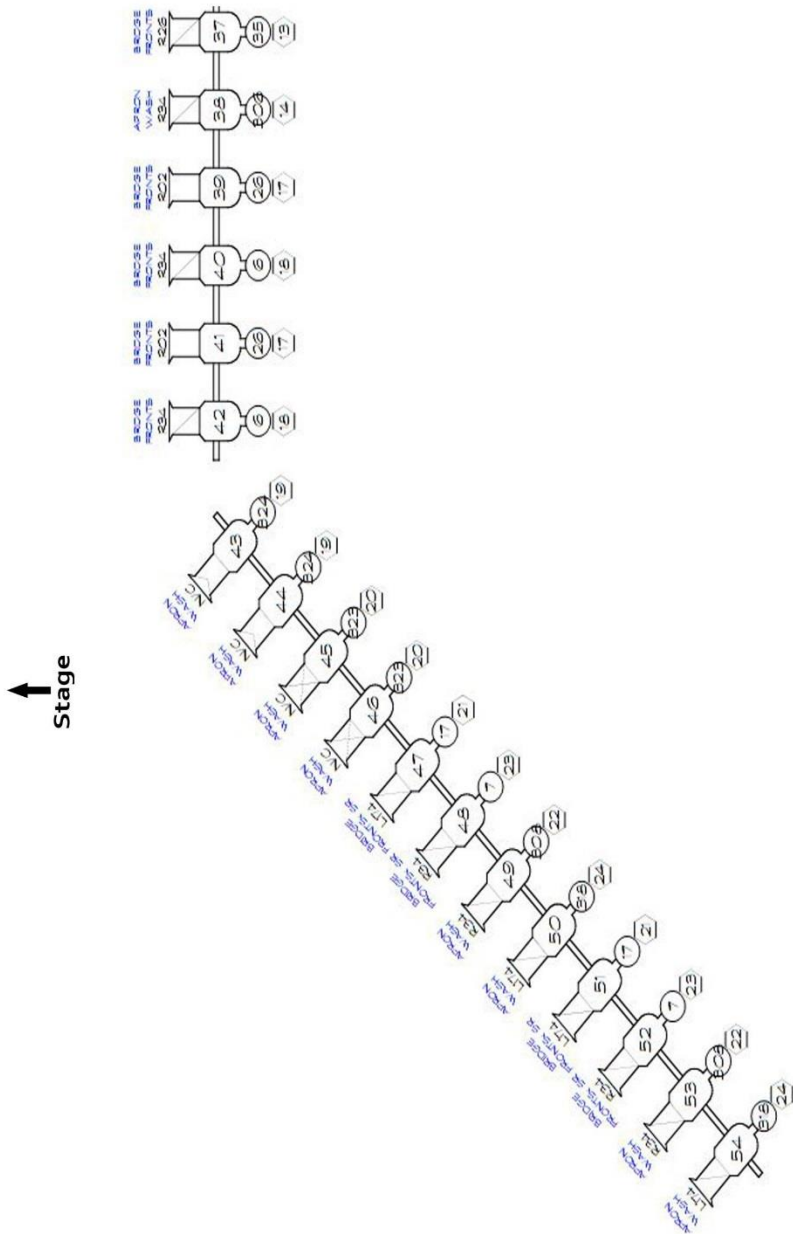
No Scale

FOH BRIDGE

FOH Cove SL

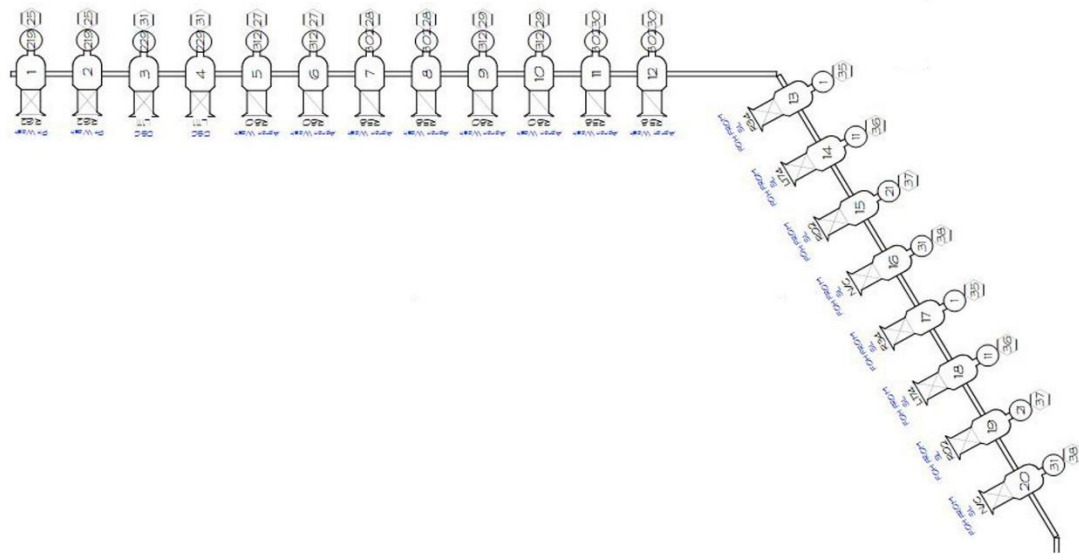
Broward Center Amaturo Tech Spec February 2015
 (pre-renovation)



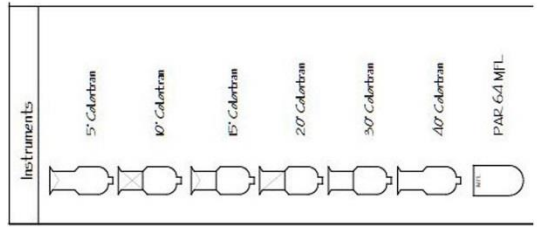
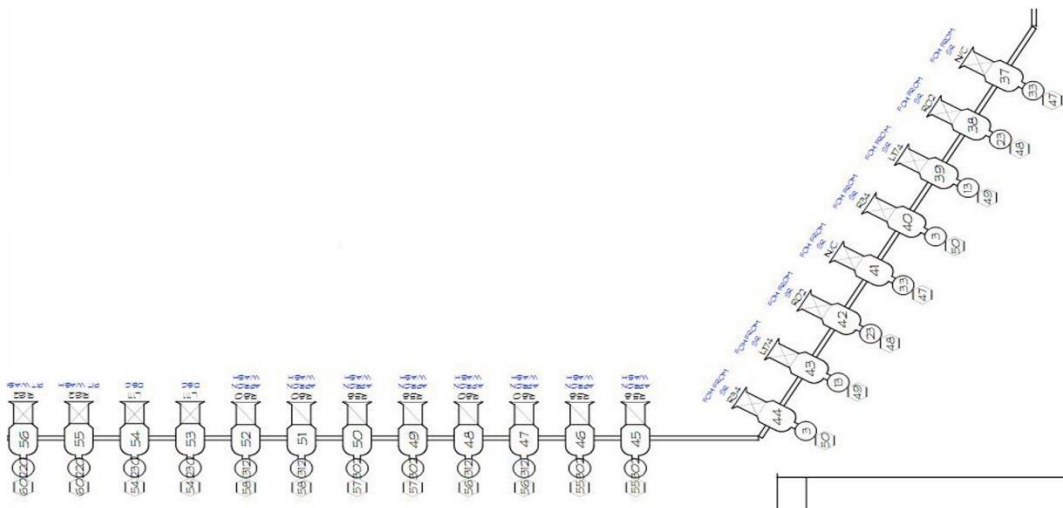


LEGEND
 Bridge
 Amp
 Template
 Unit Number
 Chorus
 Chorus

BROWARD CENTER
 FOR THE PERFORMING ARTS
 Fort Lauderdale, Florida
 Amature Theater Rep Lighting Plot
 Drawing by JRG Date: 5/12/2004
 No Scale
FOH COVE SR



↑ Stage



LEGEND

Colortran
 Template
 Unit Number
 Chorus
 Dimmer

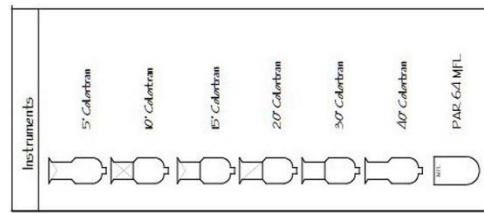
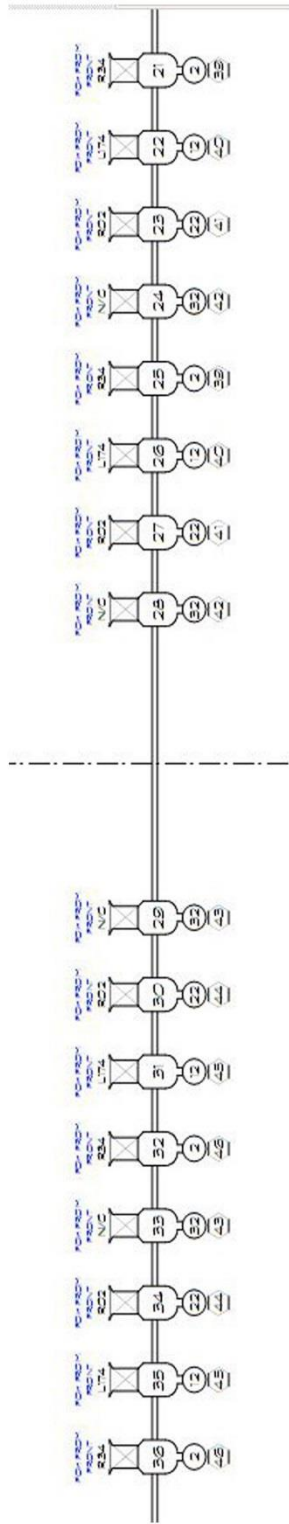
BROWARD CENTER
 FOR THE PERFORMING ARTS
 Fort Lauderdale, Florida

Amaturo Theater Rep Lighting Plot
 Drawn By JRG Date 5/12/2004
 No Scale

TECH GALLERY SL & SR

FOH Tech Gallery Rear

↑ Stage



LEGEND
 Color
 Template
 Unit Number
 Channel
 Dimmer



BROWARD CENTER
 FOR THE PERFORMING ARTS
 Fort Lauderdale, Florida
 Amaturu Theater Rep Lighting Plot
 Drawn by JRC Date 5/12/2004

TECH GALLERY REAR

CIRCUIT LOCATION

CIRCUIT	Location	Notes
1-24	FOH Cove	
25-38	Technical Gallery SL	
39-46	Technical Gallery REAR	
47-60	Technical Gallery SR	
61-64	Box Boom SL	
65-68	Box Boom SR	
69-74	Orchestra Pit	
75-104	#1 Electric Raceway	(attached to Line Set 4)
105-110	Drop Box SL	4'4" from Plaster Line
111-116	Drop Box SR	4'6" from Plaster Line
117-128	Drop Box SR	8' from Plaster Line
129-134	Drop Box SR	9'10" from Plaster Line
135-140	Drop Box SR	10'10" from Plaster Line
141-146	Drop Box SL	13'1" from Plaster Line
147-152	Drop Box SR	13'4" from Plaster Line
153-164	Drop Box SR	16'4" from Plaster Line
165-170	Drop Box SR	18'10" from Plaster Line
171-176	Drop Box SR	19'10" from Plaster Line
177-182	Drop Box SL	22'2" from Plaster Line
183-188	Drop Box SR	22'6" from Plaster Line
189-200	Drop Box SR	25'6" from Plaster Line
201-206	Drop Box SR	28' from Plaster Line
207-212	Drop Box SR	29' from Plaster Line
213-224	Drop Box SL	30' from Plaster Line
225-236	Drop Box SR	30' from Plaster Line
237-242	Drop Box SL	31'6" from Plaster Line
243-248	Drop Box SR	31'6" from Plaster Line
249-254	Fly Gallery SL	
255-260	Fly Gallery SR	
261-264	DSL Wall	
265-268	DSR Wall	
269-272	USL Wall	
273-288	USR Wall	
NON-DIMS		
A,B	FOH Cove and Technical Galleries	
C,D	Fly Galleries SL and SR	
E,F,G,H	DSL, USL, DSR, USR	

ORCHESTRA EQUIPMENT AND CONCERT SHELL

ORCHESTRA EQUIPMENT

96	Wenger Orchestra Chairs
6	Cello Chairs
87	Music Stands w/lights
1	Conductor's Podium and Stand
10	Stools
10	3'x 6' Tables

RISERS: Black skirting is available for risers

10	4'x 8'x 8''h
10	4'x 8'x 16''h
20	4'x 8'x 24''h

STEP UNITS:

2	8'' single step units
2	16'' step units
2	24'' step units

PIANOS (Note: Pianos tuned only by House Tuner Only - tuning not included)

2	9' Steinway Concert Grand Model D
1	7' Steinway Grand Model B
3	Yamaha Uprights

ORCHESTRA CONCERT SHELL:

The Amaturio Theatre is equipped with 13 Wenger acoustical shell walls that can be arranged in a variety of configurations. Each shell piece is 6' wide in approximately 12' high with a 2' outrigger on the rear. Each shell piece is easily moveable with locking casters.



DRESSING ROOM / WARDROBE / SUPPORT SPACES

DRESSING ROOMS:

All dressing rooms are located directly behind the stage, and are accessible from either side. The numbering starts closest to SL, and proceeds across to SR. All rooms are equipped with showers, toilets, mirrors, chairs and costume racks. The smaller dressing rooms have a counter running the length of one long wall, while the larger rooms have counters running along both long walls. Companies working under an AEA contract should use the smaller number for dressing room assignments. There is an audio feed from the stage throughout the area.

Dressing Room #	Number of People	Dimensions
Room #115	6-8 people	8' 6"W x 18' 4"L
Room #116	12-18 people	14' W x 18' 4"L
Room #117	12-18 people	14' W x 18' 4"L
Room #118	6-8 people	8' 6"W x 18' 4"L



Amaturo Small Dressing Room
(1 of 2) (seats 9)



Amaturo Large Dressing Room
(1 of 2) (seats 18)

WARDROBE ROOM:



There is no dedicated Wardrobe room at the Broward Center, just a small room for minor repairs. Shows booked into the Au-Rene Theatre have priority use of this room.

LAUNDRY ROOM:

The center has one laundry room to facilitate both theaters. It is located on stage level between the two theater spaces. There are three washers and three dryers in the laundry room, as well as a double sink.

Arrangements must be made in advance, as shows booked into the Au-Rene Theatre have priority use of this room.



CARPENTRY SHOP

Broward Center has a small wood shop for general repairs and limited welding equipment for metal & steel, located in the Au-Rene backstage. Its availability is dependent on activity in the Au-Rene Theatre.



GREEN ROOM / WARM-UP SPACE

The Amaturio Green Room is 35' x 11' 6", and has a commercial grade coffee maker, standard refrigerator/freezer, and a sink. There is an audio feed from the stage, and a CCTV connection (television not included). It can be used as a Catering Room, a Wardrobe Room, a Production Office or a Rehearsal/Warm-up room. It has a section of mirrors and barres.



There are additional mirrors and barres outside of dressing room #118, and in the stage entrance to Up Stage Left.



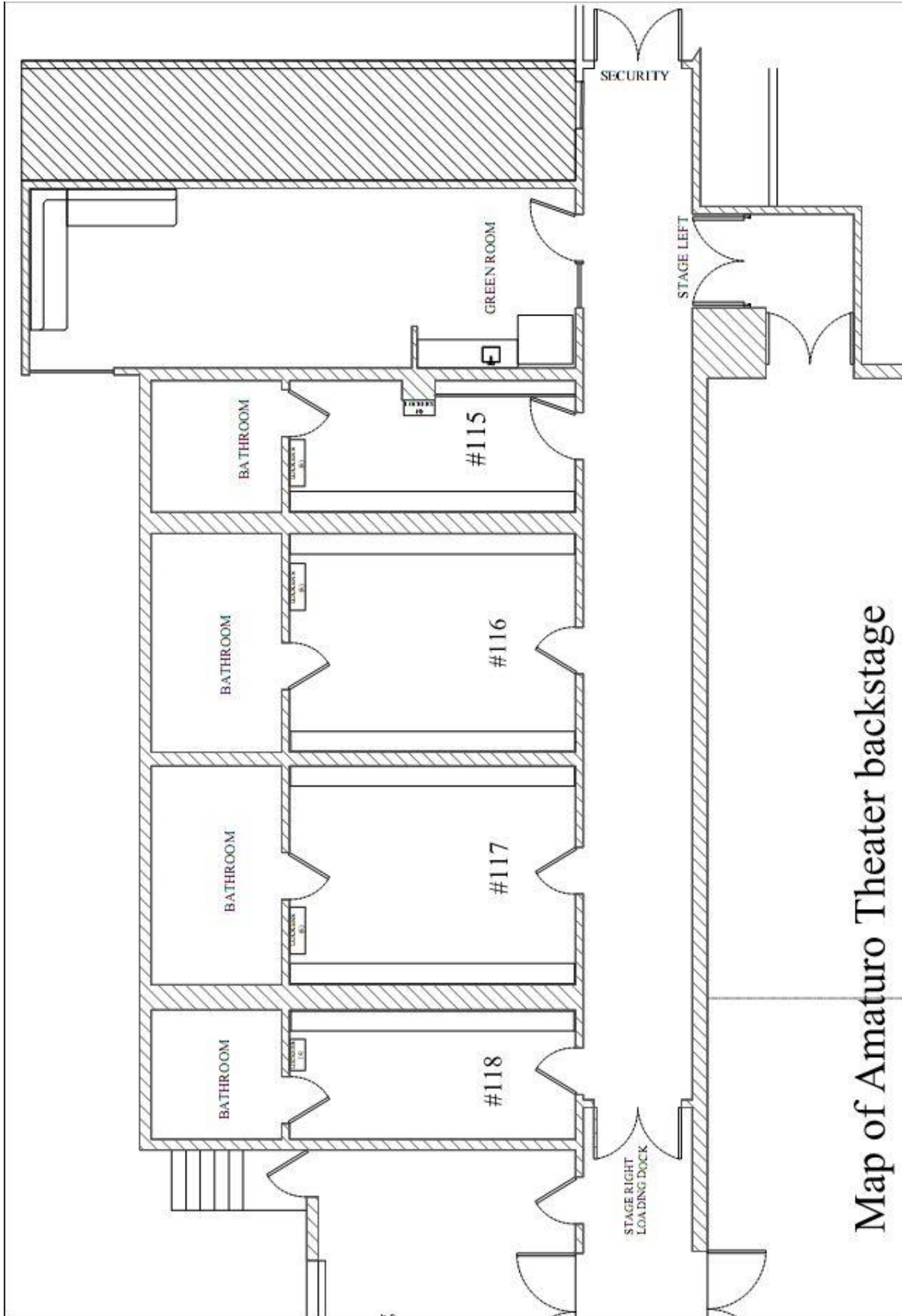
SUPPORT SPACES

The Amaturio Theater is not equipped with office space for clients, but each dressing room, as well as the Green Room, can be equipped with a phone line and a high-speed internet connection. Room #118 has been the traditional favorite for production use, but any of the rooms can set up as an office. Phone and internet connections require advance notice, as the available outside lines must be shared with the Au-Rene Theater.

ADDITIONAL RENTAL SPACES

The following space must be reserved in advance, and is subject to availability: The Einstein Room is 36' x 18' and is located next to Au-Rene Green Room. It has no mirrors or bars.

Backstage Map



Map of Amatur Theater backstage

LOCAL SERVICES

GROUND TRANSPORTATION

Checker Taxi
(954) 923-9999

Yellow Cab
(954) 777-7777

Broward County Transit
(954) 357-8400
www.Broward.org/bct

A Personal Touch Limousine Service
(561) 478-2282

Water Taxi
(954) 467-6677

Sun Trolley
(954) 761-3543

Tri-Rail
(800) 874-7254
www.Tri-rail.com

LODGING INFORMATION

The Broward Center for the Performing Arts maintains several official lodging partners. If your organization is seeking housing, please contact the following properties and identify yourself as an artist, crew or patron of the Broward Center. The hotel will give you our special rates if available.

Hampton Inn
250 N. Andrews Ave.
Fort Lauderdale, FL 33301
954.924.2700
hamptoninnftlauderdale.com

Sheraton Suites
555 NW 62nd Street
Fort Lauderdale, FL 33309
954.772.5400
sheratonsuitesfortlauderdale.com

W Fort Lauderdale
999 N. Fort Lauderdale Beach Blvd.
Fort Lauderdale, FL 33304
866.616.2572
wfortlauderdalehotel.com

Riverside Hotel
620 E. Las Olas Blvd.
Fort Lauderdale, FL 33301
800.325.3280
riversidehotel.com

BANKING

Sun Trust Bank
601 W. Broward Blvd
Fort Lauderdale, FL 33312
(954) 713-1492

Bank of America
401 East Las Olas Blvd
Fort Lauderdale, FL 33301
(954) 524-6581

Wachovia
1 East Broward Blvd
Fort Lauderdale, FL 33301
954-762-9200

There is also a Bank of America ATM located in the main lobby of the Au-Rene Theater at the Broward Center

COPIES/PRINTING

FedEx Office
300 North Federal Highway
Fort Lauderdale, FL 33301
954-467-1007

Reprograffia (Blueprints)
801 N. Andrews Ave
Fort Lauderdale FL 33301
954-525-0157

DELIVERY SERVICES

US Post Office
400 NW 7th Ave
Ft. Lauderdale, FL 33311
(800) ASK-USPS
(954) 523-0327

The Broward Center has regularly scheduled daily delivery/pick up from UPS, FedEx and USPS

ENTERTAINMENT / ATTRACTIONS

Ft. Lauderdale has many choices for entertainment all year around from beaches to museums and everything in-between. Here are just a few choices.

AutoNation IMAX Theatre
(at the Museum of Discovery & Science)
401 S.W. 2nd Street
Fort Lauderdale, FL 33312
(954) 467-6637

Greater Ft. Lauderdale Convention & Visitors Bureau
(954) 765-4466
www.sunny.org

Museum of Art Fort Lauderdale
One East Las Olas Blvd.
Fort Lauderdale, FL 33301
(954) 525-5500

Billie Swamp Safari
(Everglades Tours, Airboat rides, Swamp Buggy rides)
800-GO-SAFARI
www.billieswamp.com/

Seminole Hard Rock Hotel & Casino
1 Seminole Way
Hollywood, Florida 33314
(954) 327-7625

DINING / NIGHTLIFE

Please check out the “Go Riverwalk” and “Riverwalk A & E” websites below for more information on restaurants and nightlife surrounding the Broward Center.

<http://www.goriverwalk.com/>

<http://www.riverwalkartsandentertainment.com/>

The Production Department has menu books available which includes local restaurant menus, many with take-out and delivery available. There are many restaurants, bars and clubs within walking distance of the Broward Center. Here are just a few choices.

Taps Restaurant & Lounge

330 Himmarshee St
Fort Lauderdale, FL 33312
954-459-7770

<http://www.tapswineandbeer.com/>

Walking Distance: .03 mile

YOLO

333 E Las Olas Blvd
Fort Lauderdale, FL
(954) 523-1000

www.yolorestaurant.com

Walking Distance: Less than 1 mile

The Chimney House

701 W Las Olas Blvd
Fort Lauderdale, FL 33312
(954) 900-5352

www.thechimneyhouse.net

Walking Distance: .01 mile (next to BCPA)

15th Street Fisheries

1900 SE 15th Street
Fort Lauderdale, FL 33316
(954) 763-2777

www.15streetfisheries.com

Walking Distance: 2.77 miles

Bimini Boatyard

1555 SE 17th Street
Fort Lauderdale, FL 33316
(954) 525-7400

www.biminiboatyard.com

Walking Distance: 3.01 miles

Tarpon Bend (restaurant & bar)

200 SW 2nd Street
Fort Lauderdale, FL 33301
954-523-3233

www.tarponbend.com

Walking Distance: .04 mile

Chima Brazilian Steakhouse

2400 E Las Olas Blvd
Fort Lauderdale, FL 33301
(954) 712-0580

www.chima.cc

Walking Distance: 2.8 miles

America's Backyard

100 SW 3 Ave
Fort Lauderdale, FL 33312
(954) 4449-9569

www.myamericasbackyard.com

Walking Distance: .02 mile

Grille 401

401 E Las Olas Blvd
Fort Lauderdale, FL 33301
(954) 767-0222

www.grille401.com

Walking Distance: Less than 1 mile

da Campo Osteria

3333 NE 32 Ave
Fort Lauderdale, FL 33308
(954) 226-5002

www.dacamporestaurant.com

Walking Distance: 6.4 miles

FLORISTS

Ann's Florist & Greenhouse
1001 E Las Olas Blvd
Fort Lauderdale, FL
(954) 761-3334

A Basket Affair
830 E. Oakland Park Blvd, Suite 101
Oakland Park, FL 33334
(954) 567-2052

GYM

Bally Total Fitness
750 W Sunrise Blvd
Fort Lauderdale, FL 33312
(954) 764-8666

The Firm Fitness Center
928 N Federal Hwy
Fort Lauderdale, FL 33304
(954) 767-6277

The Fitness Company
110 SE 6th St – 7th Floor
Contact Rhonda 954-761-1110
FAX 954-463-4952

LA Fitness
3825 N. Federal Hwy.
Contact: Matt (954) 567-2727
Day Passes \$15.00

HAIR

Las Olas Barber Shop
1400 E. Las Olas Blvd.
Ft. Lauderdale, FL 33301
Open 7 days a week, will come to theatre
(954) 462-1351

Source Spa & Salon
1881 NE 26th Street, Suite 30
Wilton Manors, Florida 33305
(954) 568-1998

HARDWARE/SUPPLIES

Home Depot
1000 NE 4th Street
Fort Lauderdale, FL 33304

McDonald's Hardware
245 SW 24 Street
Fort Lauderdale, FL 33315
954-463-2000

Miami Stagecraft (sales & rentals)
2855 East 11th Ave
Hialeah, FL 33013
305-836-9356
(9:00 am – 5:00 pm M-F)

Stage Equipment and Lighting, Inc.
12250 NE 13th Court
Miami, FL 33161
(305) 891-2010

LAUNDRY / DRY CLEANING

Dry Cleaning Depot
730 W. Broward Blvd
954-522-1126

Fashion Cleaners
2427 W. Broward Blvd
954-583-8225

MASSAGE (will come to theater or housing)

James Perc
(Swedish and Deep Tissue massage; Hot Stone)
Lic # MA43130
(954) 534-6611
bodyworkbyjim@yahoo.com

Lawrence Zwarich
(Swedish and Deep Tissue massage)
Lic # MA43125
(954) 383-8891
cdnlar@hotmail.com

Diva's Day Spa
Full-service Spa located next door to the Broward Center in the Symphony building. Will come to the theater for massages.
(954) 522-1141 x 6 or (954) 771-9772
(ask for Jacki and let her know you are a performer at the Broward Center for a discount on services)

SHOPPING

Publix (Grocery and Pharmacy)

601 South Andrews Avenue
Fort Lauderdale, FL 33301
954-728-8330
(7:00am – 11:00pm)

Whole Foods Market

2000 N Federal Hwy
Fort Lauderdale, Florida 33305
(954) 565-5655
Mon - Sun: 8am - 10pm

Walgreen's Pharmacy

700 Broward Blvd
Fort Lauderdale 33301
954-463-9937
(7:00am- 11:00pm)

Galleria Mall

2414 East Sunrise Blvd
Fort Lauderdale, Florida 33304
Phone: (954) 564-1015

The Fresh Market

424 N Federal Hwy, Fort Lauderdale, FL 33301
(954) 763-1250
Mon - Sun: 8am - 10pm

CVS/Pharmacy

1 North Federal Highway
Fort Lauderdale, FL 33301
(954) 524-0500

7-11

460 W Broward Blvd,
Fort Lauderdale, FL
(954) 467-3856
(24 Hour)

Sawgrass Mills Mall (Outlet Mall)

12801 West Sunrise Blvd
Sunrise, FL 33323
(954) 846-2350

MEDICAL

Hospitals and clinics are listed first, followed by Doctors (listed alphabetically by specialty)

HOSPITALS

Broward General
1600 South Andrews Avenue
Fort Lauderdale FL 33304
954-355-4400

Imperial Point Medical Center
6401 North Federal Highway
Fort Lauderdale, FL 33308
954-776-8500

URGENT CARE

Broward Health Urgent Care
200 Northwest 7th Avenue
Fort Lauderdale, FL 33311
(954) 759-6794

Concentra Urgent Care Center
1347 S. Andrews Avenue
Fort Lauderdale, FL 33304
954-767-9999

Health Med Centers (Cash/Credit Only)
1493 SE 17th Street
Fort Lauderdale, FL 33316
954-525-7595

CHIROPRACTIC

Downtown Chiropractic Center
1601 E. Broward Blvd.
Ft. Lauderdale, FL
(954) 463-1166

Marcus Chiropractic Center
Dr. Peter Marcus
2710 E. Oakland Park Blvd, FT L 33306
954-566-3027 (Will make House Calls)

Dr. Patrick Helmer - Chiropractor
9532 Griffin Rd. Suite 1800
Cooper City, FL 33328
(954) 434-1800

DENTAL

Dr. Jeffrey Bartlett
2440 E. Sunrise
In the Galleria Mall
954-566-8668

Dr. Thomas Jeson
3000 E. Commercial Blvd.
Ft. Lauderdale, FL 33308
(954) 491-1904
fax – (954) 772-3453

Dr. Larry Levinson
9 SW 17th St.
Ft. Lauderdale, FL 33315
(954) 524-3117
Beeper 209-8945

DERMATOLOGY

Dr. Babinski
1102 E. Broward Blvd.
Fort Lauderdale, FL 33312
(954) 463-5406

Dr. Smith / Las Olas Dermatology
800 E. Broward Blvd. Suite 507
Ft. Lauderdale, FL 33301
(954) 763-4331

EAR / NOSE/ THROAT

Dr. Herbert Moselle, ENT
201 NW 82nd Ave.
Plantation, FL 33324
(954) 472-1212

Dr. Bruce Weissman* - ENT, Voice Care
2100 Hallandale Beach Blvd Suite 405
Hallandale, FL 33009
o: (954) 454-0544 cell: (305) 505-0666;
beeper: (305) 727-6939
*will make theatre calls

EYE CARE

Dr. Goldberg and Dr. Nolan
Eye Physician & Surgeon
2334 NE 53rd Street
Ft. Lauderdale, FL 33308
(954)776-2020

FAMILY/GENERAL PRACTICE

Dr. Ed Grenet - Health-Med Centers
1493 SE 17th Street
Ft. Lauderdale, FL 33316
(954) 525-7595 fax# (954) 525-7599

Dr. Harvey Kleiner, DO
8890 W Oakland Park Blvd, Suite 100
Fort Lauderdale, FL 33351
(954) 741-3304

Dr. Myron Davidson
2500 NE 15th Ave
Wilton Manors, FL
(954) 533-5382

Dr. Glenn Moran, DO
Plantation Family Medical Assocs
201 Northwest 82nd Avenue Suite 401
Plantation, FL 33324
(954) 472-5100

OB/GYN

Dr. Gail Pezzullo-Burgs
(561) 392-7704 (Specify Plantation office)

All Women's Health
(954) 452- 5850

Dr. Trudi Fahey at Broward Medical Center
(954) 467-2013

Dr. Amy Sonnenblick
(954) 635-6243

ORTHOPEDICS

Dr. Bruce Fletcher
Northwest Broward Orthopedic Associates
5901 Colonial Dr, Suite 201
Pompano Beach, FL 33063
(954) 979-3255